

P-PP

FLAT PIN TERMINAL, PRE-INSULATED WITH POLYCARBONATE, FOR COPPER CONDUCTORS, HALOGEN FREE



CERTIFICATIONS & APPROVALS



Features

TECHNICAL INFORMATION

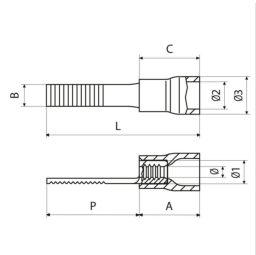
Minimum operating temperature	-20°C
Maximum operating temperature	115°C
Threshold of operating temperature for short periods	130°C
Type of insulation	partial
Easy insertion input	Yes
Surface treatment	tin plating
Crimping geometry	radial

WEIGHT AND DIMENSIONS

Tip type	Flat
----------	------

CLASSIFICATION AND DATA ORDERING

Customs code	85369010
--------------	----------



MATERIAL COMPOSITION AND TREATMENTS

Conductor body material	Rame elettrolitico con purezza superiore al 99,95%
Insulated cover material	Polycarbonate
Annealing	Yes
Halogen free	Yes

LOGISTIC

Unit in minimal packaging	100PCE
---------------------------	--------

CERTIFICATIONS

ROHS compliant	Yes
EN 45545-2 certification	HL2
EN 45545-2 certification	HL3
Self-extinguishing fire class according to UL 94	V0
UL standard	486A-486B



VP-PP Insulated cover colour **green** Range of cable cross section [mm²] **0.2**

tipo	B [mm]	P [mm]	L [mm]	A [mm]	C [mm]	Ø2 [mm]	Ø3 [mm]	Ø [mm]	Cable stripping length [mm]	Unit in standard packaging [pce]
VP-PP12/19	1.9	12.4	22.4	4.2	10	3	4.4	1.2	5	4000

RP-PP Insulated cover colour **red** Range of cable cross section [mm²] **0.25**

tipo	B [mm]	P [mm]	L [mm]	A [mm]	C [mm]	Ø2 [mm]	Ø3 [mm]	Ø [mm]	Cable stripping length [mm]	Unit in standard packaging [pce]
RP-PP12	3	12.8	22.9	4.2	10.1	4	5.5	1.8	5	3000
RP-PP12/1	3	11.3	21.4	4.2	10.1	4	5.5	1.8	5	3000
RP-PP12/19	1.9	13.2	23.3	4.2	10.1	4	5.5	1.8	5	3000
RP-PP12/23	2.3	13.2	23.3	4.2	10.1	4	5.5	1.8	5	2500
RP-PP14	3	14.8	24.9	4.2	10.1	4	5.5	1.8	5	2500
RP-PP16/23	2.3	17.2	27.3	4.2	10.1	4	5.5	1.8	5	2500

BP-PP Insulated cover colour **blue** Range of cable cross section [mm²] **1.5**

tipo	B [mm]	P [mm]	L [mm]	A [mm]	C [mm]	Ø2 [mm]	Ø3 [mm]	Ø [mm]	Cable stripping length [mm]	Unit in standard packaging [pce]
BP-PP12	3.5	12.8	22.9	4.2	10.1	4.9	6.4	1.8	5	2500
BP-PP12/25	2.5	13.3	23.4	4.2	10.1	4.9	6.4	1.8	5	2000
BP-PP12/29	2.9	13.3	23.4	4.2	10.1	4.9	6.4	1.8	5	2500
BP-PP16/25	2.5	17.2	27.3	4.2	10.1	4.9	6.4	1.8	5	2500

GP-PP Insulated cover colour **yellow** Range of cable cross section [mm²] **4**

tipo	B [mm]	P [mm]	L [mm]	A [mm]	C [mm]	Ø2 [mm]	Ø3 [mm]	Ø [mm]	Cable stripping length [mm]	Unit in standard packaging [pce]
GP-PP12	4	13.3	27.4	8	14.1	6.6	8.1	3.6	11	1000
GP-PP17	2.9	19.1	33.2	8	14.1	6.6	8.1	3.6	11	1000