

N-M

RING TERMINAL, NON-INSULATED, WITH UNBRAZED NECK, FOR COPPER CONDUCTORS



Features

TECHNICAL INFORMATION

Minimum operating temperature	-50°C
Maximum operating temperature	150°C
Number of holes on the palm	1
Surface treatment	tin plating
Crimping geometry	indent

LOGISTIC

Unit in minimal packaging	100PCE
---------------------------	--------

CERTIFICATIONS

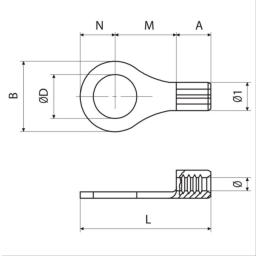
ROHS compliant	Yes
----------------	-----

MATERIAL COMPOSITION AND TREATMENTS

Conductor body material	Rame elettrolitico con purezza superiore al 99,95%
Annealing	Yes

CLASSIFICATION AND DATA ORDERING

Customs code	85369010
--------------	----------



RN-M Range of cable cross section [mm²]
0.25

tipo	Screw diameter	ØD [mm]	B [mm]	N [mm]	M [mm]	I [mm]	Tightening torque (high conductivity screw) [nm]	Tightening torque (8.8 grade screw) [nm]	L [mm]	A [mm]	Ø [mm]	Cable stripping length [mm]	Ø1 [mm]	Unit in standard packaging [pce]
RN-M2	M2	2.2	5.6	2.8	4.5	8.7			11.5	4.2	1.8	5	3.4	7000
RN-M3	M3	3.2	5.6	2.8	4.5	8.7	0.5	0.5	11.5	4.2	1.8	5	3.4	7000
RN-M3.5	M3.5	3.7	5.6	2.8	4.5	8.7			11.5	4.2	1.8	5	3.4	7000
RN-M3.5/1	M3.5	3.7	6.2	3.1	7.1	11.3			14.4	4.2	1.8	5	3.4	7000
RN-M4	M4	4.3	7	3.5	6.5	10.7			14.2	4.2	1.8	5	3.4	7000
RN-M4/3	M4	4.3	7.8	3.9	7.1	11.3			15.2	4.2	1.8	5	3.4	7000
RN-M5	M5	5.3	7.8	3.9	7.1	11.3			15.2	4.2	1.8	5	3.4	7000
RN-M6	M6	6.4	9.4	4.7	8.1	12.3	5	7	17	4.2	1.8	5	3.4	6000
RN-M6/1	M6	6.4	12	6	10.3	14.5	5	7	20.5	4.2	1.8	5	3.4	4000
RN-M7	M7	7.2	9.4	4.7	8.1	12.3			17	4.2	1.8	5	3.4	6000
RN-M8	M8	8.4	12	6	10.3	14.5	10	20	20.5	4.2	1.8	5	3.4	4000
RN-M10	M10	10.5	15.5	7.75	13.05	17.25	20	35	25	4.2	1.8	5	3.4	2000
RN-M12	M12	13	18	9	15.5	19.7	40	50	28.7	4.2	1.8	5	3.4	2000

BN-M Range of cable cross section [mm²]
1.5

tipo	Screw diameter	ØD [mm]	B [mm]	N [mm]	M [mm]	I [mm]	Tightening torque (high conductivity screw) [nm]	Tightening torque (8.8 grade screw) [nm]	L [mm]	A [mm]	Ø [mm]	Cable stripping length [mm]	Ø1 [mm]	Unit in standard packaging [pce]
BN-M2	M2	2.2	5.6	2.8	5	9.2			12	4.2	2.4	5	4	6000
BN-M3	M3	3.2	5.6	2.8	5	9.2	0.5	0.5	12	4.2	2.4	5	4	6000
BN-M3.5	M3.5	3.7	5.6	2.8	5	9.2			12	4.2	2.4	5	4	6000
BN-M3.5/1	M3.5	3.7	6.2	3.1	6.5	10.7			13.8	4.2	2.4	5	4	6000
BN-M4	M4	4.3	8	4	6.5	10.7			14.7	4.2	2.4	5	4	5000
BN-M5	M5	5.3	8	4	7.5	11.7			15.7	4.2	2.4	5	4	5000
BN-M6	M6	6.4	9.4	4.7	8.6	12.8	5	7	17.5	4.2	2.4	5	4	5000
BN-M6/1	M6	6.4	12	6	10.3	14.5	5	7	20.5	4.2	2.4	5	4	5000
BN-M7	M7	7.2	10	5	7.8	12			17	4.2	2.4	5	4	5000
BN-M8	M8	8.4	12	6	10.3	14.5	10	20	20.5	4.2	2.4	5	4	4000

tipo	Screw diameter	ØD [mm]	B [mm]	N [mm]	M [mm]	I [mm]	Tightening torque (high conductivity screw) [nm]	Tightening torque (8.8 grade screw) [nm]	L [mm]	A [mm]	Ø [mm]	Cable stripping length [mm]	Ø1 [mm]	Unit in standard packaging [pce]
BN-M10	M10	10.5	15.5	7.75	13.05	17.25	20	35	25	4.2	2.4	5	4	2500
BN-M12	M12	13	18	9	15.5	19.7	40	50	28.7	4.2	2.4	5	4	2000

GN-M Range of cable cross section [mm²]

4

tipo	Screw diameter	ØD [mm]	B [mm]	N [mm]	M [mm]	I [mm]	Tightening torque (high conductivity screw) [nm]	Tightening torque (8.8 grade screw) [nm]	L [mm]	A [mm]	Ø [mm]	Cable stripping length [mm]	Ø1 [mm]	Unit in standard packaging [pce]
GN-M3	M3	3.2	8	4	8.1	14.5	0.5	0.5	18.5	8	3.6	7	5.6	3000
GN-M3.5	M3.5	3.7	8	4	8.1	14.5			18.5	8	3.6	7	5.6	3000
GN-M4	M4	4.3	9	4.5	8.1	14.5			19	8	3.6	7	5.6	3000
GN-M5	M5	5.3	9	4.5	8.1	14.5			19	8	3.6	7	5.6	2500
GN-M6	M6	6.4	11	5.5	11.1	17.5	5	7	23	8	3.6	7	5.6	2500
GN-M6/1	M6	6.4	11	5.5	8.1	14.5	5	7	20	8	3.6	7	5.6	2500
GN-M7	M7	7.2	11	5.5	11.1	17.5			23	8	3.6	7	5.6	2500
GN-M8	M8	8.4	13.6	6.8	12.1	18.5	10	20	25.3	8	3.6	7	5.6	2000
GN-M8/1	M8	8.4	11	5.5	8.1	14.5	10	20	20	8	3.6	7	5.6	2500
GN-M10	M10	10.5	13.6	6.8	12.1	18.5	20	35	25.3	8	3.6	7	5.6	2000
GN-M10/1	M10	10.5	15.5	7.75	13.85	20.25	20	35	28	8	3.6	7	5.6	2000
GN-M12	M12	13	19	9.5	15.1	21.5	40	50	31	8	3.6	7	5.6	1000
GN-M14	M14	15	21	10.5	16.1	22.5	65	70	33	8	3.6	7	5.6	1000
GN-M16	M16	17	24	12.5	17.1	23.5	90	90	35.5	8	3.6	7	5.6	1000