

TCP

PLUGS FOR CABLE GLANDS, PA6.6 POLYAMIDE



Features

TECHNICAL INFORMATION

| | |
|--|-------|
| Range of operating temperature (dynamic) | -20°C |
| Range of operating temperature (static) | -40°C |
| Colour | black |

CLASSIFICATION AND DATA ORDERING

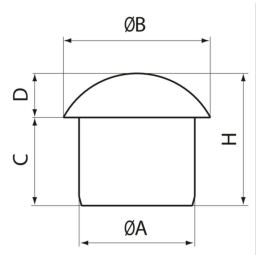
| | |
|--------------|----------|
| Customs code | 39269097 |
|--------------|----------|

MATERIAL COMPOSITION AND TREATMENTS

| | |
|----------|-----------------|
| Material | Polyamide PA6.6 |
|----------|-----------------|

CERTIFICATIONS

| | |
|--|------|
| ROHS compliant | Yes |
| Self-extinguishing fire class according to UL 94 | V2 |
| Ingress Protection | IP68 |



TCP

| tipo | C [mm] | D [mm] | ØA [mm] | ØB [mm] | Unit in minimal packaging [pce] | Unit in standard packaging [pce] |
|-------|--------|--------|---------|---------|---------------------------------|----------------------------------|
| TCP5 | 10.8 | 4.5 | 4.5 | 8.5 | 100 | 3000 |
| TCP10 | 12 | 4.5 | 6 | 12 | 100 | 1500 |
| TCP12 | 12 | 4.5 | 6.8 | 12 | 100 | 1000 |
| TCP15 | 11.5 | 5 | 8 | 11 | 100 | 1500 |
| TCP18 | 13 | 5 | 9.5 | 12.5 | 100 | 800 |
| TCP20 | 14 | 6 | 10 | 15 | 100 | 800 |
| TCP25 | 15 | 8 | 12.5 | 17 | 100 | 300 |
| TCP30 | 18 | 9 | 12.5 | 22.5 | 100 | 300 |
| TCP35 | 18 | 8 | 16 | 19.5 | 100 | 200 |
| TCP40 | 19 | 9 | 19 | 22.5 | 50 | 150 |
| TCP45 | 20 | 10 | 22 | 30 | 50 | 100 |
| TCP50 | 25 | 12 | 27.5 | 38 | 25 | 50 |
| TCP55 | 23.5 | 12 | 31.5 | 36.5 | 25 | 50 |
| TCP60 | 23.5 | 12 | 34.5 | 40 | 25 | 50 |
| TCP65 | 26.5 | 12 | 37.5 | 48 | 15 | 30 |
| TCP70 | 26.5 | 12 | 43 | 48 | 15 | 30 |