

KY-M

ANTI-VIBRATION REINFORCED RING TERMINAL, PRE-INSULATED WITH PA6.6, FOR COPPER CONDUCTORS, HALOGEN FREE



Features

TECHNICAL INFORMATION

Minimum operating temperature	-20°C
Maximum operating temperature	105°C
Threshold of operating temperature for short periods	110°C
Number of holes on the palm	1
Barrel reinforcement ring	Yes
Type of insulation	partial
Easy insertion input	Yes
Surface treatment	tin plating
Reinforced with anti-vibration collar	Yes
Vibration resistant	Yes
Crimping geometry	radial

LOGISTIC

Unit in minimal packaging	100PCE
---------------------------	--------

CERTIFICATIONS

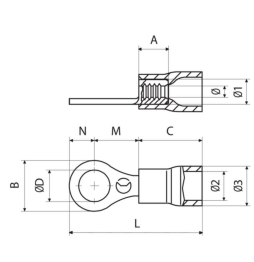
EN 45545-2 certification	HL1
Self-extinguishing fire class according to UL 94	V2

MATERIAL COMPOSITION AND TREATMENTS

Conductor body material	Rame elettrolitico con purezza superiore al 99,95%
Annealing	Yes
Halogen free	Yes

CLASSIFICATION AND DATA ORDERING

Customs code	85369010
--------------	----------



RKY-MInsulated cover colour
redRange of cable cross section [mm²]
0.25

tipo	Screw diameter	ØD [mm]	B [mm]	N [mm]	M [mm]	Tightening torque (high conductivity screw) [nm]	Tightening torque (8.8 grade screw) [nm]	L [mm]	C [mm]	Ø2 [mm]	Ø [mm]	Cable stripping length [mm]	Unit in standard packaging [pce]	ROHS compliant
RKY-M3	M3	3.2	5.5	2.5	5	0.5	0.5	18.5	11	4.5	1.7	6	3000	Yes
RKY-M3.5	M3.5	3.7	5.5	2.5	5			18.5	11	4.5	1.7	6	3000	Yes
RKY-M3.5/1	M3.5	3.7	6.6	3.1	6.3			20.4	11	4.5	1.7	6	3000	Yes
RKY-M4	M4	4.3	6.6	3.1	6.3			20.4	11	4.5	1.7	6	3000	Yes
RKY-M5	M5	5.3	8	3.8	7			21.8	11	4.5	1.7	6	2500	Yes
RKY-M6/1	M6	6.4	11.6	5.8	11	5	7	27.8	11	4.5	1.7	6	2000	Yes
RKY-M8	M8	8.4	11.6	5.8	11	10	20	27.8	11	4.5	1.7	6	2500	Yes
RKY-M10	M10	10.5	13.6	6.6	13.9	20	35	31.5	11	4.5	1.7	6	1500	Yes
RKY-M12	M12	13	19.6	9.4	16	40	50	36.4	11	4.5	1.7	6	1500	Yes

BKY-MInsulated cover colour
blueRange of cable cross section [mm²]
1.5

tipo	Screw diameter	ØD [mm]	B [mm]	N [mm]	M [mm]	Tightening torque (high conductivity screw) [nm]	Tightening torque (8.8 grade screw) [nm]	L [mm]	C [mm]	Ø2 [mm]	Ø [mm]	Cable stripping length [mm]	Unit in standard packaging [pce]	ROHS compliant
BKY-M3	M3	3.2	6.6	3	4.8	0.5	0.5	18.8	11	5.2	2.3	6	2500	Yes
BKY-M3.5	M3.5	3.7	6.6	3	4.8			18.8	11	5.2	2.3	6	2500	Yes
BKY-M3.5/1	M3.5	3.7	6.6	3.1	6.3			20.4	11	5.2	2.3	6	2500	Yes
BKY-M4	M4	4.3	8.5	4	7.8			22.8	11	5.2	2.3	6	2500	Yes
BKY-M5	M5	5.3	8.5	4	7.8			22.8	11	5.2	2.3	6	2500	Yes
BKY-M6/1	M6	6.4	12	5.8	11	5	7	27.8	11	5.2	2.3	6	2000	Yes
BKY-M8	M8	8.4	12	5.8	11	10	20	27.8	11	5.2	2.3	6	1500	Yes
BKY-M10	M10	10.5	13.6	6.6	13.9	20	35	31.5	11	5.2	2.3	6	1500	Yes
BKY-M12	M12	13	19.2	9.4	19.2	40	50	36.4	11	5.2	2.3	6	1000	Yes

GKY-MInsulated cover colour
yellowRange of cable cross section [mm²]
4

tipo	Screw diameter	ØD [mm]	B [mm]	N [mm]	M [mm]	Tightening torque (high conductivity screw) [nm]	Tightening torque (8.8 grade screw) [nm]	L [mm]	C [mm]	Ø2 [mm]	Ø [mm]	Cable stripping length [mm]	Unit in standard packaging [pce]	ROHS compliant
GKY-M3,5	M3,5	3.7	7.2	3.6	6.1			22.7	13	7	3.4	8	1000	Yes
GKY-M4	M4	4.3	9.5	4.5	9.1			26.6	13	7	3.4	8	1000	Yes
GKY-M5	M5	5.3	9.5	4.5	9.1			26.6	13	7	3.4	8	1000	Yes
GKY-M6	M6	6.4	12	6	10.5	5	7	29.5	13	7	3.4	8	1000	Yes
GKY-M8	M8	8.4	15	7.5	13.5	10	20	34	13	7	3.4	8	1000	Yes
GKY-M10	M10	10.5	15	7.5	13.5	20	35	34	13	7	3.4	8	1000	Yes
GKY-M12	M12	13	19.2	9.6	16	40	50	38.6	13	7	3.4	8	1000	Yes
GKY-M14	M14	15	32	16	25.2	65	70	54.2	13	7	3.4	8	500	Yes
GKY-M16	M16	17	32	16	25.2	90	90	54.2	13	7	3.4	8	500	Yes