

BC 71,6 UT HBUS BK - Mounting base housing



2896267

<https://www.phoenixcontact.com/in/products/2896267>

Please be informed that the data shown in this PDF document is generated from our Online Catalog. Please find the complete data in the user documentation. Our General Terms of Use for Downloads are valid.



DIN rail housing for use in distribution boards in accordance with DIN 43880, Lower housing part with base latch, width: 71.6 mm, height: 89.7 mm, depth: 48.9 mm, color: black (9005), cross connection: DIN rail connector (optional), number of positions cross connector: 16

Your advantages

- Coordinated housing and connection system for faster device development
- Individual online configuration for diverse applications in building automation
- Variety of connection technology
- Can be mounted on the DIN rail or the wall
- With DIN-rail-mountable bus connector and power connector system as an option
- Tool-free mounting
- Available in overall widths from one to nine HP (17.8 mm ... 161.6 mm)
- Compliant with DIN EN 43880

Commercial Data

Item number	2896267
Packing unit	10 pc
Minimum order quantity	10 pc
Sales Key	ACH
Product Key	ACHBAA
Catalog Page	Page 699 (C-1-2013)
GTIN	4046356096713
Weight per Piece (including packing)	41.37 g
Weight per Piece (excluding packing)	41.001 g
Customs tariff number	85389099
Country of origin	DE

Technical Data

Notes

Assembly instruction:	Refer to the data sheet for the range in the download area.
-----------------------	---

Product properties

Product type	Lower part of the housing
Product family	BC UT HBUS
Type	Lower housing part with base latch
Housing type	DIN rail housing for use in distribution boards in accordance with DIN 43880
Ventilation openings present	no
Housing series	BC

Dimensions

PCB design

PCB thickness	1.4 mm ... 1.8 mm
---------------	-------------------

Material specifications

Color	black (9005)
Flammability rating according to UL 94	V0
CTI according to IEC 60112	<400
Surface characteristics	untreated
Housing material	Polycarbonate

Environmental and real-life conditions

Power dissipation single housing for 20 °C

Ambient temperature	20 °C
Reduction factor	1
Mounting position	vertical
Power dissipation	11.95 W

Power dissipation single housing for 30 °C

Ambient temperature	30 °C
Reduction factor	0.84
Mounting position	vertical
Power dissipation	10 W

Power dissipation single housing for 40 °C

Ambient temperature	40 °C
Reduction factor	0.72
Mounting position	vertical
Power dissipation	8.6 W

BC 71,6 UT HBUS BK - Mounting base housing



2896267

<https://www.phoenixcontact.com/in/products/2896267>

Power dissipation single housing for 50 °C

Ambient temperature	50 °C
Reduction factor	0.6
Mounting position	vertical
Power dissipation	7.2 W

Power dissipation single housing for 60 °C

Ambient temperature	60 °C
Reduction factor	0.48
Mounting position	vertical
Power dissipation	5.7 W

Power dissipation single housing for 70 °C

Ambient temperature	70 °C
Reduction factor	0.38
Mounting position	vertical
Power dissipation	4.5 W

Vibration test

Specification	IEC 60068-2-6:2007-12
Frequency	10 - 150 - 10 Hz
Sweep speed	1 octave/min
Amplitude	0.15 mm (10 Hz ... 58.1 Hz)
Acceleration	2g (58.1 Hz ... 150 Hz)
Test duration per axis	2.5 h
Test directions	X-, Y- and Z-axis

Glow-wire test

Specification	IEC 60695-2-11:2014-02
Temperature	850 °C
Time of exposure	30 s

Mechanical strength / tumbling barrel

Specification	IEC 60068-2-31:2008-05
Height of fall	50 cm
Frequency	50

Shocks

Specification	IEC 60068-2-27:2008-02
Pulse shape	Half-sine
Acceleration	15g
Shock duration	11 ms
Number of shocks per direction	3
Test directions	X-, Y- and Z-axis (pos. and neg.)

Degree of protection (IP code)

Specification	IEC 60529:1989-11 + AMD 1:1999-11 + AMD 2:2013-08
---------------	---

BC 71,6 UT HBUS BK - Mounting base housing



2896267

<https://www.phoenixcontact.com/in/products/2896267>

Ambient conditions

Max. IP code to attain	IP20
Ambient temperature (operation)	-40 °C ... 105 °C (depending on power dissipation)
Ambient temperature (storage/transport)	-40 °C ... 70 °C
Ambient temperature (assembly)	-5 °C ... 100 °C
Relative humidity (storage/transport)	95 %

PCB data

Number of PCB holders	9
Type of PCB mount	Latching
Thickness of the PCB	1.4 mm ... 1.8 mm

Mounting

Mounting type	DIN rail mounting/wall mounting
Mounting position	Vertical (horizontal DIN rail)

Packaging specifications

Type of packaging	packed in cardboard
Outer packaging type	Carton

BC 71,6 UT HBUS BK - Mounting base housing

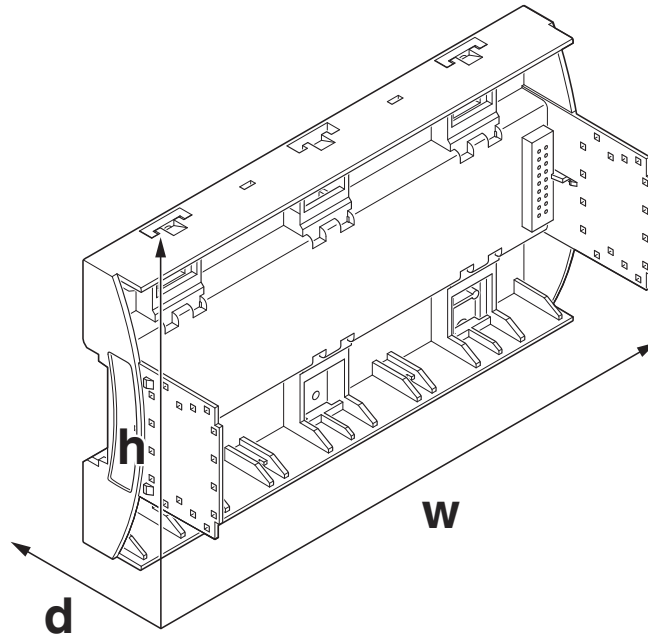
2896267

<https://www.phoenixcontact.com/in/products/2896267>



Drawings

Dimensional drawing



Schematic figure for illustrating the item dimensions. The figure is not of the desired product. For further details, refer to the product drawings in the "Downloads" tab.

BC 71,6 UT HBUS BK - Mounting base housing

2896267

<https://www.phoenixcontact.com/in/products/2896267>



Approvals



EAC

Approval ID: B.01687



UL Recognized

Approval ID: FILE E 240868

BC 71,6 UT HBUS BK - Mounting base housing



2896267

<https://www.phoenixcontact.com/in/products/2896267>

Classifications

ECLASS

ECLASS-10.0.1	27182702
ECLASS-11.0	27182702

ETIM

ETIM 8.0	EC001031
----------	----------

UNSPSC

UNSPSC 21.0	31261500
-------------	----------

BC 71,6 UT HBUS BK - Mounting base housing



2896267

<https://www.phoenixcontact.com/in/products/2896267>

Environmental Product Compliance

China RoHS	Environmentally friendly use period: unlimited = EFUP-e
	No hazardous substances above threshold values

BC 71,6 UT HBUS BK - Mounting base housing



2896267

<https://www.phoenixcontact.com/in/products/2896267>

Mandatory Accessories

BC 71,6 OT U11 KMGY - Upper part of housing

2896050

<https://www.phoenixcontact.com/in/products/2896050>

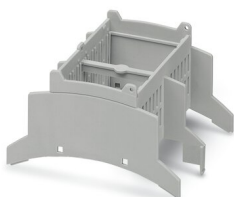


DIN rail housing for use in distribution boards in accordance with DIN 43880, Upper housing part (U11) with vents, Installation depth connection technology: 11.1 mm, width: 71.6 mm, height: 89.7 mm, depth: 54.85 mm, color: light grey (7035)

BC 71,6 OT U22 KMGY - Upper part of housing

2896063

<https://www.phoenixcontact.com/in/products/2896063>



DIN rail housing for use in distribution boards in accordance with DIN 43880, Upper housing part (U22) with vents, Installation depth connection technology: 22.35 mm, width: 71.6 mm, height: 89.7 mm, depth: 54.85 mm, color: light grey (7035)

BC 71,6 UT HBUS BK - Mounting base housing

2896267

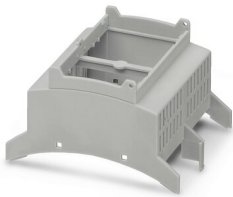
<https://www.phoenixcontact.com/in/products/2896267>



BC 71,6 OT 0111 KMGY MOQ100 - Upper part of housing

1093075

<https://www.phoenixcontact.com/in/products/1093075>

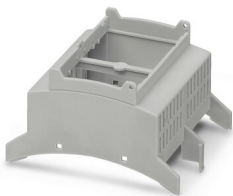


DIN rail housing for use in distribution boards in accordance with DIN 43880, modular upper housing part, width: 71.6 mm, height: 89.7 mm, depth: 54.85 mm, color: light grey (7035)

BC 71,6 OT 0201 KMGY - Upper part of housing

1091777

<https://www.phoenixcontact.com/in/products/1091777>



DIN rail housing for use in distribution boards in accordance with DIN 43880, modular upper housing part, width: 71.6 mm, height: 89.7 mm, depth: 54.85 mm, color: light grey (7035)

BC 71,6 UT HBUS BK - Mounting base housing

2896267

<https://www.phoenixcontact.com/in/products/2896267>



BC 71,6 OT U11 BK - Upper part of housing

2202539

<https://www.phoenixcontact.com/in/products/2202539>

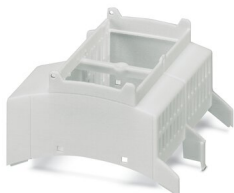


DIN rail housing for use in distribution boards in accordance with DIN 43880, Upper housing part (U11) with vents, Installation depth connection technology: 11.1 mm, width: 71.6 mm, height: 89.7 mm, depth: 54.85 mm, color: black (9005)

BC 71,6 OT 0121 KMGY - Upper part of housing

2202302

<https://www.phoenixcontact.com/in/products/2202302>



DIN rail housing for use in distribution boards in accordance with DIN 43880, modular upper housing part, width: 71.6 mm, height: 89.7 mm, depth: 54.85 mm, color: light grey (7035)

BC 71,6 UT HBUS BK - Mounting base housing

2896267

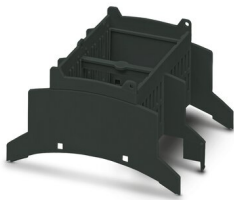
<https://www.phoenixcontact.com/in/products/2896267>



BC 71,6 OT U22 BK - Upper part of housing

2202988

<https://www.phoenixcontact.com/in/products/2202988>

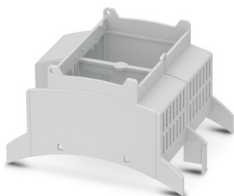


DIN rail housing for use in distribution boards in accordance with DIN 43880, Upper housing part (U22) with vents, Installation depth connection technology: 22.35 mm, width: 71.6 mm, height: 89.7 mm, depth: 54.85 mm, color: black (9005)

BC 71,6 OT 2101 KMGY - Upper part of housing

1016754

<https://www.phoenixcontact.com/in/products/1016754>



DIN rail housing for use in distribution boards in accordance with DIN 43880, modular upper housing part, width: 71.6 mm, height: 89.7 mm, depth: 54.85 mm, color: light grey (7035)

BC 71,6 UT HBUS BK - Mounting base housing

2896267

<https://www.phoenixcontact.com/in/products/2896267>



BC 71,6 OT U11 BK VPE160 - Upper part of housing

1006942

<https://www.phoenixcontact.com/in/products/1006942>

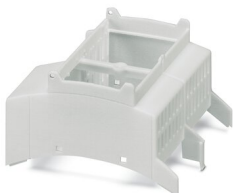


DIN rail housing for use in distribution boards in accordance with DIN 43880, Upper housing part (U11) with vents, Installation depth connection technology: 11.1 mm, width: 71.6 mm, height: 89.7 mm, depth: 54.85 mm, color: black (9005)

BC 71,6 OT 0121 KMGY MOQ100 - Upper part of housing

1226471

<https://www.phoenixcontact.com/in/products/1226471>



DIN rail housing for use in distribution boards in accordance with DIN 43880, modular upper housing part, width: 71.6 mm, height: 89.7 mm, depth: 54.85 mm, color: light grey (7035)

BC 71,6 UT HBUS BK - Mounting base housing

2896267

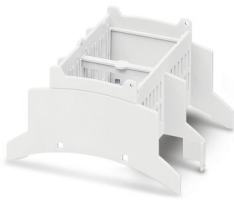
<https://www.phoenixcontact.com/in/products/2896267>



BC 71,6 OT U22 WH - Upper part of housing

1181628

<https://www.phoenixcontact.com/in/products/1181628>

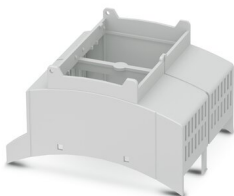


DIN rail housing for use in distribution boards in accordance with DIN 43880, Upper housing part (U22) with vents, Installation depth connection technology: 22.35 mm, width: 71.6 mm, height: 89.7 mm, depth: 54.85 mm, color: white (9016)

BC 71,6 OT 1010 KMGY MOQ100 - Upper part of housing

1136628

<https://www.phoenixcontact.com/in/products/1136628>



DIN rail housing for use in distribution boards in accordance with DIN 43880, modular upper housing part, width: 71.6 mm, height: 89.7 mm, depth: 54.85 mm, color: light grey (7035)

BC 71,6 UT HBUS BK - Mounting base housing

2896267

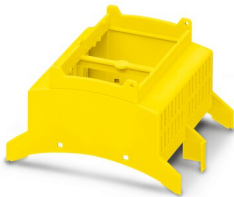
<https://www.phoenixcontact.com/in/products/2896267>



BC 71,6 OT U11 YE - Upper part of housing

1163769

<https://www.phoenixcontact.com/in/products/1163769>



DIN rail housing for use in distribution boards in accordance with DIN 43880, Upper housing part (U11) with vents, Installation depth connection technology: 11.1 mm, width: 71.6 mm, height: 89.7 mm, depth: 54.85 mm, color: yellow (1018)

Accessories

FUSSRIEGEL 14,4 L30 SPERR OG - Base latch

2896998

<https://www.phoenixcontact.com/in/products/2896998>



DIN rail housing for use in distribution boards in accordance with DIN 43880, Base latch, width: 14.4 mm, height: 29.8 mm, depth: 5.9 mm, color: orange (2003)

BC 71,6 UT HBUS BK - Mounting base housing

2896267

<https://www.phoenixcontact.com/in/products/2896267>



HBUS 71,6-16P-1S BK - DIN rail bus connectors

2896296

<https://www.phoenixcontact.com/in/products/2896296>



DIN rail connector, color: black, nominal current: 3 A (Total current of 25 A max.), rated voltage (III/2): 30 V, number of positions: 16, pitch: 2.54 mm, mounting: DIN rail mounting, locking: without

PSTD 0,65X0,65/9-2,54 - Pin strip

2200700

<https://www.phoenixcontact.com/in/products/2200700>



Pin strip, color: black, type of contact: Male connector, number of potentials: 18, number of rows: 2, number of positions: 18, number of connections: 18, product range: PSTD 0,65X0,65/...-V, pitch: 2.54 mm, mounting: THR soldering, pin layout: Linear pinning, solder pin [P]: 2.5 mm, locking: without, type of packaging: packed in cardboard

BC 71,6 UT HBUS BK - Mounting base housing

2896267

<https://www.phoenixcontact.com/in/products/2896267>



HBUS8 71,6-8P-1S BK - DIN rail bus connectors

1249065

<https://www.phoenixcontact.com/in/products/1249065>



DIN rail connector, color: black, nominal current: 3 A (per contact), rated voltage (III/2): 100 V, number of positions: 8, pitch: 2.54 mm, mounting: DIN rail mounting, locking: without

Phoenix Contact 2023 © - all rights reserved

<https://www.phoenixcontact.com>

PHOENIX CONTACT (I) Pvt. Ltd.

A-58/2, Okhla Industrial Area, Phase - II, New Delhi-110 020

+91.1275.71420

info@phoenixcontact.co.in