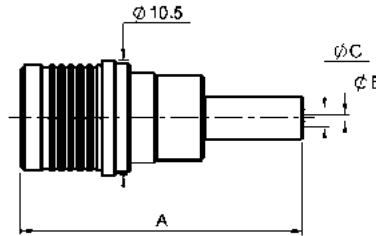
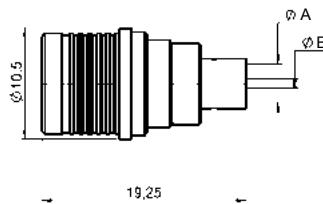


STRAIGHT PLUGS FULL CRIMP TYPE FOR FLEXIBLE CABLES



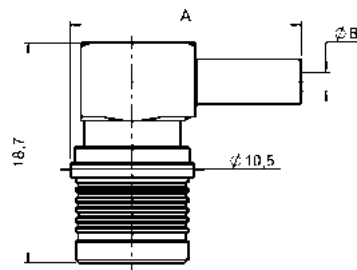
cable	part number	dimension			captive center contact	assembly	finish
		A	B	C			
2.6 / 50 S	R123 071 000	25.5	0.6	1.61	yes	M01	BBR
2.6 / 50 D	R123 072 000	25.5	0.6	1.61	yes	M01	BBR
5 / 50 S	R123 075 000	28.5	1.05	3.11	yes	M01	BBR
5 / 50 D	R123 076 000	28.5	1.05	3.11	yes	M01	BBR

STRAIGHT PLUGS SOLDER TYPE FOR SEMI-RIGID CABLES



cable	part number	dimensions		captive center contact	assembly	finish
		A	B			
.085"	R123 054 000	2.275	0.6	yes	M05	BBR
.141"	R123 055 000	3.675	1	yes	M05	BBR

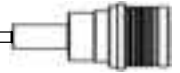
RIGHT ANGLE PLUGS CRIMP TYPE FOR FLEXIBLE CABLES



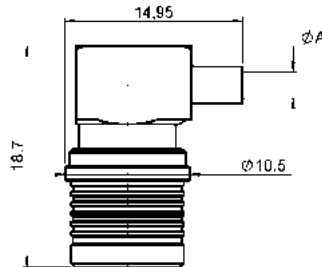
A right angle plug for 5.7 mm dia. cable is also available, please consult us.

cable	part number	dimensions		captive center contact	assembly	finish
		A	B			
2.6 / 50 S	R123 172 000	19.7	1.61	yes	M02	BBR
2.6 / 50 D	R123 174 000	19.7	1.61	yes	M02	BBR
5 / 50 S	R123 175 000	22.7	3.1	yes	M02	BBR
5 / 50 D	R123 176 000	22.7	3.1	yes	M02	BBR

Packaging: 100 pces. For unit packaging, add "W" after the P/N.

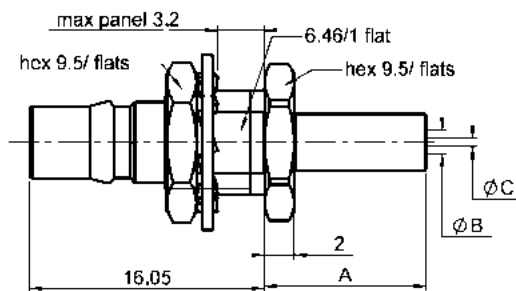


RIGHT ANGLE PLUGS SOLDER TYPE FOR SEMI-RIGID CABLES



cable	part number	captive center contact	dimension A	assembly	finish
.085"	R123 153 000	yes	2.25	M03	BBR
.085"	R123 153 003	yes	2.25	M03	Gold
.141"	R123 154 000	yes	3.7	M03	BBR
.141"	R123 154 003	yes	3.7	M03	Gold

STRAIGHT BULKHEAD JACKS FULL CRIMP TYPE FOR FLEXIBLE CABLES



cable	part number	dimensions			captive center contact	assembly	cut out	finish
		A	B	C				
2.6 / 50 S	R123 312 000	11	0.6	1.61	yes	M01	P02	BBR
2.6 / 50 D	R123 313 000	11	0.6	1.61	yes	M01	P02	BBR
5 / 50 S	R123 314 000	14	1.05	3.11	yes	M01	P02	BBR
5 / 50 D	R123 315 000	14	1.05	3.11	yes	M01	P02	BBR

Packaging: 100 pcs. For unit packaging, add "W" after the P/N.